

THE

'51



CHALLENGE





**THE  
CHALLENGE**

BY  
**THE SENIOR CLASS**

OF  
**COMMUNITY HIGH SCHOOL**

WEST CHICAGO, ILLINOIS

1951



# Board of Education

C. A. LEE  
Secretary

R. S. STUART

C. E. MACK

R. A. KELSEY  
President

M. C. FINK

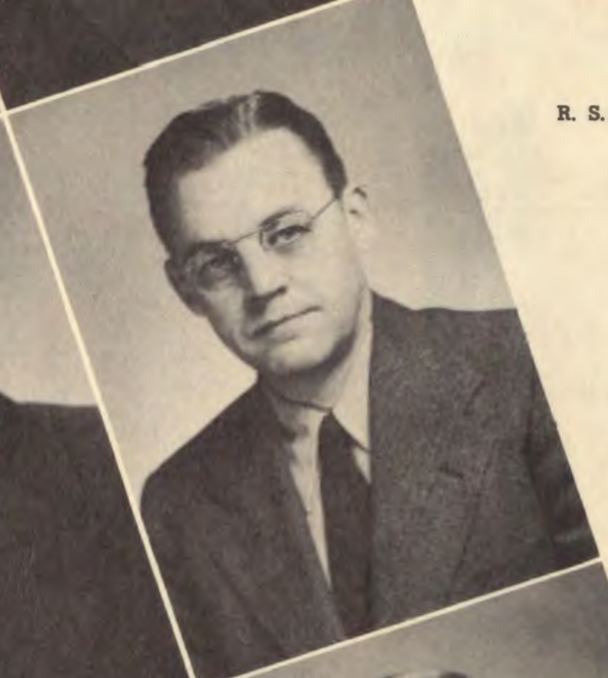
C. E. OWEN

S. D. BISHOP  
Principal



# Dedication

Dear Miss Mahoney and Mr. Bishop,  
 We wish to express  
 our thanks for the way  
 in which you have helped  
 and encouraged us  
 during our four year  
 stay here at We-Go.  
 Signed,  
 Willie and Winnie,  
 the  
 Wildcats.





# FACULTY



LAURA M. ABBOTT  
*Music*



MARIE W. BALZHISER  
*Mathematics*



G. P. BARTHELL  
*Science*



GRACE EDSON  
*Home Economics*



HOWARD FLETCHER  
*Coach*  
*Biology*



H. B. HOWARD  
*Music*



V. R. JAHNS  
*Coach*  
*Industrial Arts*



R. A. KIISKILA  
*Typing*  
*Shorthand*



HELEN KOUPAL  
*Librarian*  
*English*



ELIZABETH J. MAHONEY  
*History*



ANN R. MOORE  
*English*



FLORA A. OFFNER  
*Physical Education*



NARINA T. PAXSON  
*School Nurse*



FLORA A. PETRONE  
*Art*



ROBERT E. PRICE  
*Coach*  
*Industrial Arts*



J. D. SMITH  
*Social Science*



NORMA J. STAHL  
*English*  
*Latin*



WINNIFRED THOMASSEN  
*Bookkeeping*  
*Office Secretary*



S  
E  
N  
I  
O  
R  
S

JEAN ADAMSON  
"Jeanie"

A quiet miss with a  
pleasing way.



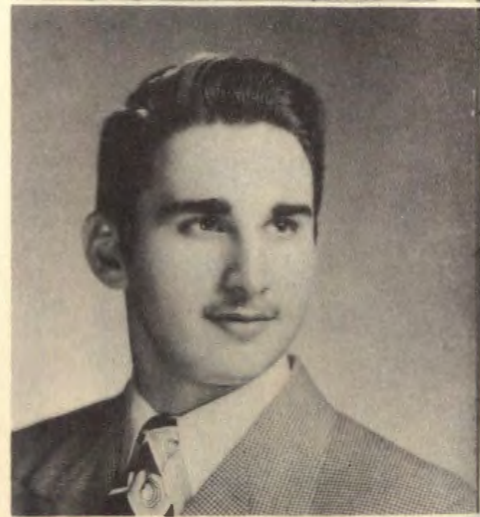
AUDREY ALBRECHT  
"Bunny"

Those dimples really  
get them!



CHRIS ARMBRUST

Chase me, girls,  
I'm full of fun.



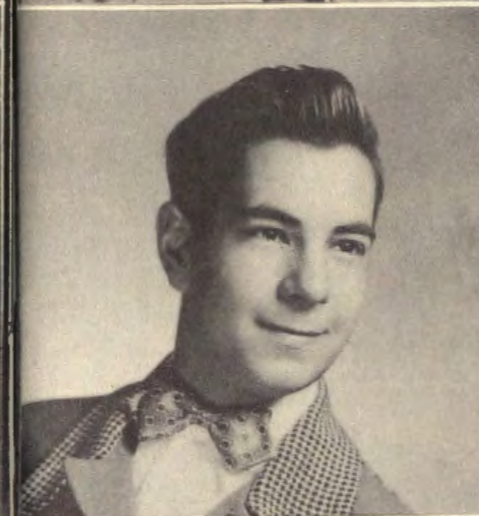
DOROTHEE ARMBRUST  
"Dot"

Ready for everything,  
work or play,  
She's a good scout in  
every way.



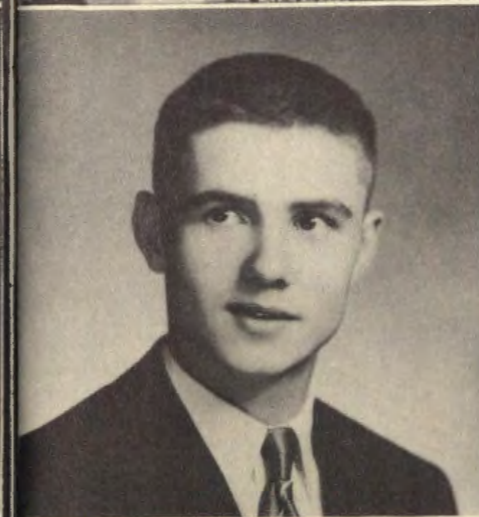
RICHARD AVERILL  
"Archie"

What's the use of run-  
ning,  
When there's plenty of  
time to walk.



RAY BADAL  
"Bugs"

Did someone say study?  
Oh, well!



LEONARD BARTSCH  
"Lennie"

Why do girls pester me  
so???



DONNA BEARDSLEY  
"Puny"

The marvel is that one  
so small,  
Should ever be a Se-  
nior at all.

RICHARD BOLLWEG  
"Dick"

I'm a quiet fellow,  
sometimes.



DAVID BOND  
"Dave"

Underneath that quiet,  
soft spoken exterior,  
Lurks a fine sense of  
humor.



CAROLE BROWN  
"Shorty"

Small, but so is a stick  
of dynamite.



GLORIA BROWN

Laughing eyes, win-  
ning smile,  
Sure they'd any heart  
beguile.







MARILYN BROWN  
"Muzhie"

She may be quiet and demure,  
May be—but don't be too sure.



ALBERT CATRIZ  
"Cat"

I stand on the brink of a great career.  
Won't someone push me off?

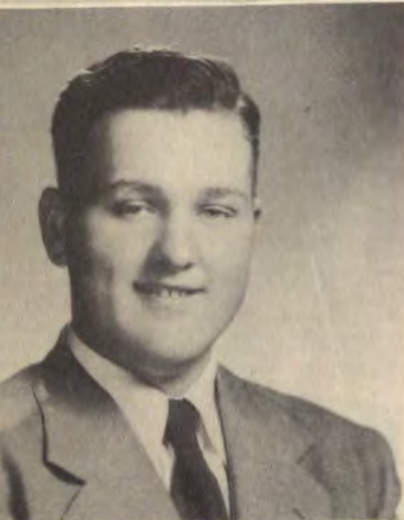


SANDRA CUE  
"Sandy"

Her eyes are blue, her hair is light,  
And all her friends think she's just right.



VERLIN DILLARD  
The less you learn,  
The less you have to remember.



LEROY BRUMMEL  
"Bulldog"  
The strong, silent type.



GEORGEANNA CHESNUT  
"Chessy"  
Music when soft voices die,  
Vibrates in memory.



SUZANNE DETTMANN  
"Suzi"  
Music in her finger tips,  
Across the keys she tears and rips.



WILLIAM DUNBAR  
"Bill"  
He's just the quiet kind  
whose nature never varies.



PATRICIA BURHANS  
"Pat"  
What! No boys in heaven,  
Then just leave me here.



GERTRUDE COSGROVE  
"Gert"  
Nice and neat and hard to beat.



RICHARD DIERKING  
"Dick"  
His ever cheerful and smiling face,  
Shows his kind and cheerful disposition.



ROLAND FIORINI  
"Peachy"  
Always a good fellow,  
A friend worth having.



DIANA BURNS  
"Dee"  
Smiling face and twinkling eye,  
We simply cannot pass her by.



JEAN CRAWFORD  
A friendly, pleasant girl is she.



DIANE DIETER  
"Di"  
Not bold, not shy, not short, not tall,  
But a pleasant mingling of them all.



JOANNE FLENS  
"Dolly"  
Smiles make the world go 'round,  
So I help it all I can.

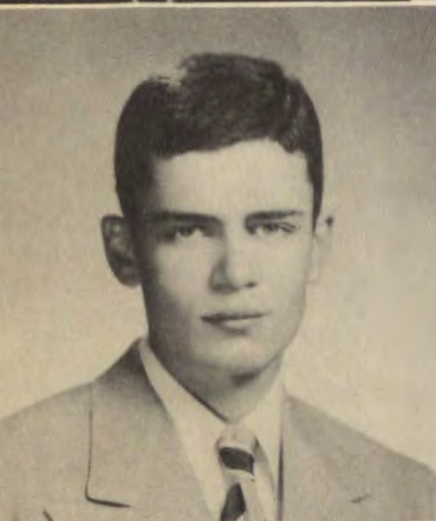




**DORIS GEIKEN**  
A blonde with a winning smile and voice. Watch out 'cause she's the gentlemen's choice.



**DOROTHY GRAMER**  
The devil has power to assume a pleasing shape.



**DONALD GRIFFIN**  
"Don"  
Long, lean, and likeable.



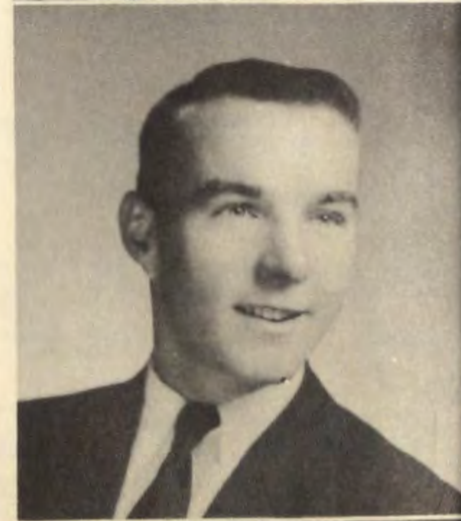
**JANET HAMMER**  
Pretty hair, sunny smile, laughing and joking all the while.

**GEORGEANNA HARBELIS**  
"Cookie"  
She's like a magnet, attractive.

**OTTO HOMER**  
"Sonny"  
Why can't the world have more like him.

**GLEN IVES**  
I'll make me famous by my art.

**CHALMER JACOB**  
With his brains, this guy's bound to go places.



**AUDREY JARCHOW**  
"Aud"  
Some girls may smile, some may laugh, But I prefer to giggle.



**CONSTANCE JUDD**  
"Connie"  
Generally speaking, She is generally speaking.



**GLENN KECK**  
I'm always looking for a good time.



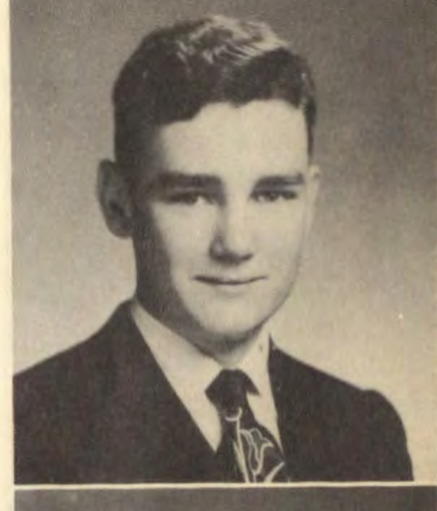
**ROBERT KOVAC**  
"Bob"  
He came, he saw, she conquered.

**DELORES LEVEY**  
"Dolly"  
Her thoughts are far away, Although she's here in body.

**DONNA KRUSE**  
"PeeWee"  
Small, dark, and nice.

**RICHARD LALLY**  
"Richie"  
I've never found the perfect girl, But it's fun looking.

**LOIS LENERTZ**  
It's nice to be natural, When you're naturally nice.







JOHN LOCKIE  
"Johnny"  
There are soda crackers  
and fire crackers,  
But he's our wise  
cracker.



ANN OWEN  
"Annie"  
Her footsteps will leave  
a mark, but not a  
stain.



ALICE PESTER  
"Al"  
Not quantity; but qual-  
ity that counts.



IRIS ROBINSON  
"I"  
Always ready for a  
good time,  
And she usually sees  
that she has one.



PATRICK LYNCH  
"Pat"  
Winds may come, and  
winds may go,  
But I'll blow on for-  
ever.



CAROLYN PAULSON  
"Trixi"  
Some think the world's  
made for fun and  
frolic—So do I!



RITA PIETROBON  
"Pete"  
She's friendly, dark,  
and full of fun;  
And has a smile for  
everyone.



BETTY RUSCHER  
Quiet and reserved is  
she.



ROBERT NEUMANN  
"Bob"  
Built for comfort, not  
for speed.



PATRICIA PAYTON  
"Pat"  
A likeable girl with  
likeable ways.



ANDREA PURDY  
"Andy"  
A friendly girl and a  
charming lass,  
A worthy addition to  
our class.



GENE SCHLUETER  
"Abie"  
Why is it men are  
ruled by women?



DONALD NICOSKI  
He has a calm look in  
his eye,  
But even looks can tell  
a lie.



LAWRENCE PESETSKI  
"Buz"  
You've got to be a foot-  
ball hero,  
To get along with the  
beautiful girls.

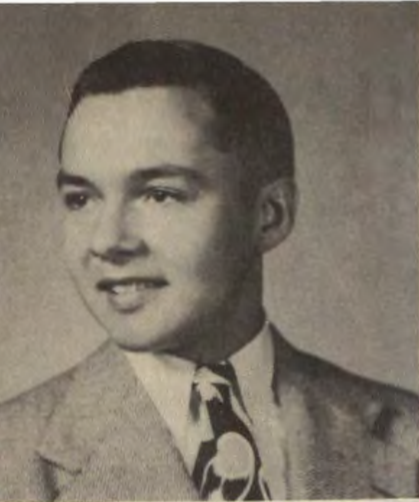


BARBARA REED  
"Barb"  
Her talents are many  
and real fascinating,  
Her faults are few and  
not worth relating.



ELIZABETH SCHMIDT  
"Betty"  
Gentle, perhaps shy,  
But a true friend to  
those who know her.

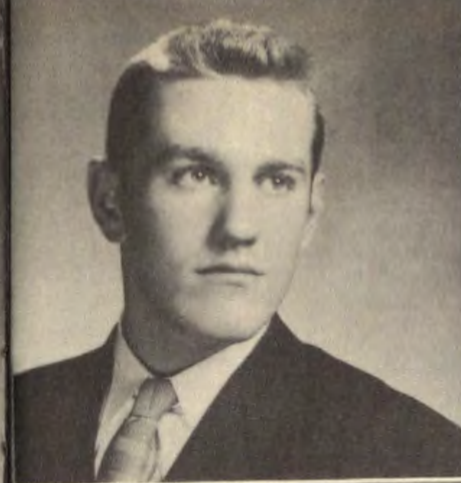




STANLEY SCHRAMER  
*"Stan"*  
 A man of deeds, not words.



WILLIAM SHAW  
*"Bill"*  
 To be great is to be misunderstood.



WALTER STRUCKMAN  
 A football player,  
 mighty fine;  
 Whose husky frame  
 helped "hold the line."



GRACE WIESBROCK  
*"Gracie"*  
 At first she seems so quiet and wise,  
 But what's that twinkle in her eyes?



ALLENE SCHUSLER  
 She's as pretty as she's sweet.



HAROLD SMITH  
*"Smitty"*  
 He puts his troubles in a box,  
 And sits on the lid.



PATRICIA WHEELER  
*"Pat"*  
 A twinkle in her eye,  
 Bespeaks a fun loving soul.



JAMES WOODWARD  
*"Woody"*  
 Life is just what we make of it,  
 And Jim makes the most of it.



IRENE SCOBEY  
 A girl who can smile,  
 Is a girl worthwhile.



CONSTANCE SPRAGUE  
*"Connie"*  
 Happy and bright, winsome and gay;  
 All know her in her own sweet way.



JOYCE WATANABE  
*"Kimi"*  
 If every good deed were a cent,  
 She'd be a millionaire.



HELEN WURTZ  
 Her ways are those of pleasantness.



MARY ANN SCOBEY  
 A dandy girl, a loyal friend,  
 Will never purposely offend.



PATRICIA STREIT  
*"Pat"*  
 A pleasant most attractive lass,  
 Who's been a leader in our class.



DAVID WEISSING  
*"Dave"*  
 The teachers always discover my faults;  
 They never appreciate my charms.



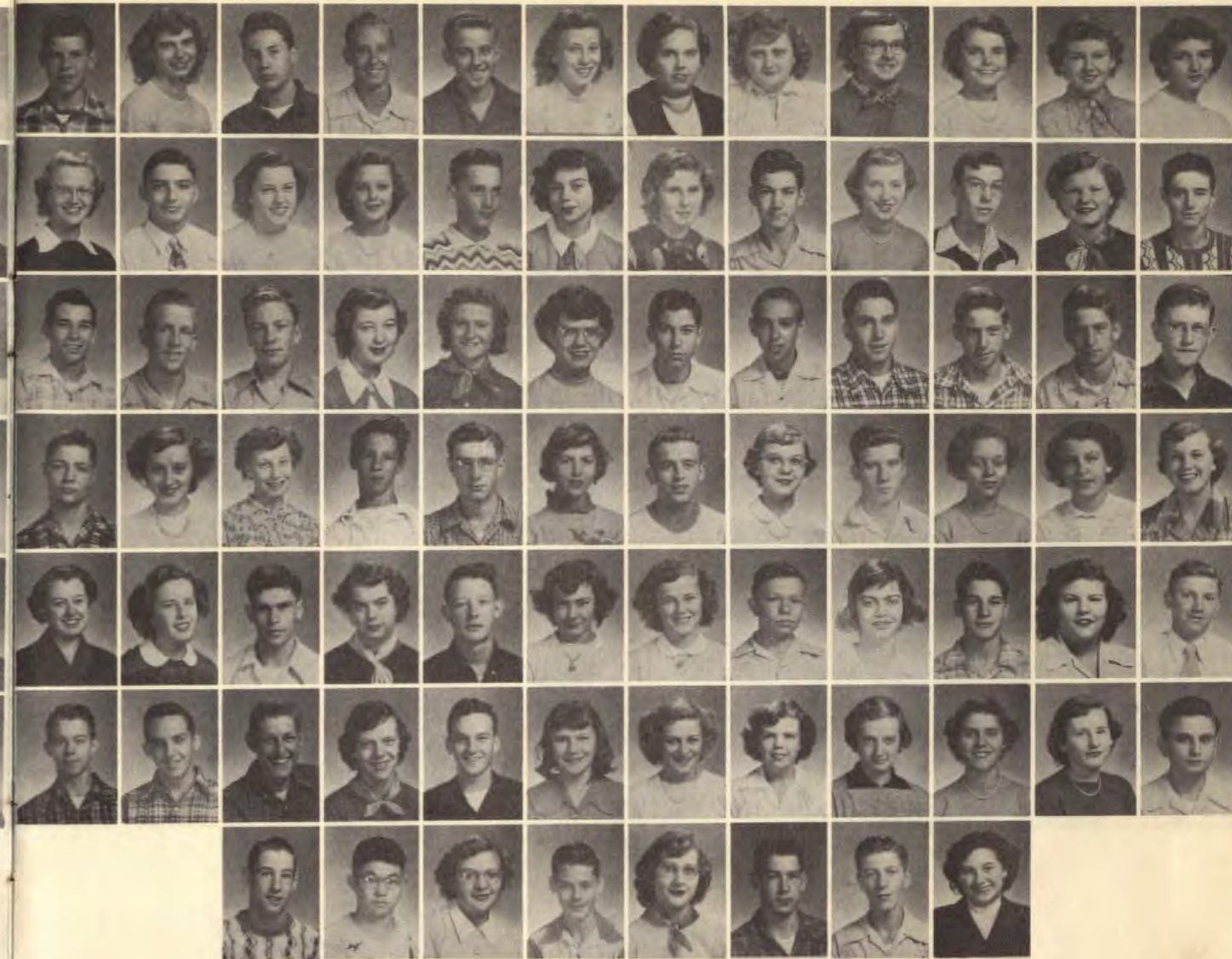
DONALD ZUEHLKE  
*"Don"*  
 Seems wide awake everywhere but school.





## JUNIORS

- 1st Row: D. Acheson, E. Baethke, M. Baker, P. Berndt, B. Blaycock, R. Blum, T. Bollweg, C. Buhr, E. Chase, B. Chase, R. Clement, B. Cobain.
- 2nd Row: B. Cook, J. Crettol, D. Dabbert, J. Dennerlein, P. Dickey, E. Diehl, E. Dierking, L. Dieter, C. Dodge, D. Elliott, B. Enders, P. Farrell.
- 3rd Row: W. Fessler, B. Fredrickson, J. Garcia, G. Giambri, B. Glasshagel, G. Gurbacki, P. Heibel, D. Heinz, G. Heinz, P. Heisler, P. Hensel, R. Hellickson.
- 4th Row: B. Hutson, F. Kimmel, G. Klein, R. Kullman, B. Lanz, K. Lenertz, M. Lister, S. Lockie, M. Lynch, L. McLeod, A. McNichols, K. Maguire.
- 5th Row: R. Marecek, N. Meriam, J. Murphy, M. J. Mueller, M. R. Mueller, F. Olsen, P. Pester, D. Phillips, B. Raffel, S. Rucker, B. Russell, D. Sandhop.
- 6th Row: B. Sauber, G. Schlueter, A. Schram, B. Sheahan, K. Shelton, B. Simpson, A. Speck, H. Stahl, S. Stone, D. Swenson, D. Thielking, A. Utterback.
- 7th Row: G. Van Dran, A. Wegener, I. Wheeler, B. Whelchel, F. Whitton, J. Wilder, A. Zolin.



## SOPHOMORES

- 1st Row: A. Anderson, M. Armbrust, A. Babcock, G. Baum, R. Berger, M. Bollweg, N. Bradley, J. Braun, F. Brinkman, G. Brooks, J. Brown, J. Bryson.
- 2nd Row: M. Buckley, D. Crane, L. Cue, L. Dettmann, C. Dierks, B. Dieter, C. Enders, J. Fleps, L. Fischer, R. Frye, M. Gardner, C. Goering.
- 3rd Row: K. Golan, C. Gustafson, K. Havlik, M. Heinberg, N. Heinz, E. Heiser, J. Hill, D. Homer, R. Jelinek, Don Kaelin, Dick Kaelin, J. Kaelin.
- 4th Row: J. Kammes, J. Karp, C. Kearns, D. Kelly, J. Kistenbroker, G. Kozlowski, D. Kroning, B. Kruse, M. LeBaron, B. Lootens, S. McAleese, M. McNichols.
- 5th Row: G. Main, B. Marecek, R. Mell, B. Miller, J. Mishler, P. Moecker, I. Munson, H. Neylon, M. Patch, O. Pietrobon, N. Rakow, J. Rawlings.
- 6th Row: T. Rucker, J. Sauber, R. Schmuengerow, V. Scull, O. Shaw, S. Silvasy, N. Simpson, L. Stillman, E. Stillman, L. Streit, M. Struckman, D. Taylor.
- 7th Row: G. Tinnes, W. Watanabe, J. Wegener, B. Weinbrecht, L. Wheeland, K. Wheeland, R. Wilson, S. Young.





## FRESHMEN

- 1st Row: H. Albrecht, H. Barbrey, C. Beach, P. Beamer, M. Bennett, C. Born, L. Bromilow, D. Brown, F. Brown, I. Brown, R. Brown, L. Buckner.
- 2nd Row: D. Buhr, G. Catriz, J. Cobain, C. Cook, J. Cook, J. Cornella, R. Craig, S. Craig, A. Crane, A. Dean, P. Diehl, M. Doherty.
- 3rd Row: H. Dovre, J. Fox, M. Fry, E. Garcia, M. Genovesi, J. Gent, P. Giambri, B. Glasshagel, L. Graham, M. Gramer, F. Grommes, R. Logan.
- 4th Row: P. Gruenberg, F. Hansen, M. Heinz, D. Hellickson, D. Holm, J. Keck, D. Kerner, T. Koch, S. Kroning, N. Lee, E. Lenertz, G. Grommes.
- 5th Row: C. Long, N. Lootens, D. Markl, A. Mitros, C. Otto, J. Poole, R. Purdy, J. Raffel, P. Raymond, M. Root, L. Schlick, D. Schramer.
- 6th Row: M. Scott, C. Sinclair, J. Sleeman, L. Snyder, M. Spoden, B. Stuart, T. Swiatowski, D. Taylor, O. Tolley, W. Van Burkom, B. Vetter, N. Walker.
- 7th Row: M. Wheeler.

# A CTIVITIES







### Challenge Staff

Seated: S. Dettmann, G. Ives, Miss Moore, A. Owen.

Standing: O. Homer, R. Averill, G. Chesnut, C. Sprague, S. Cue, P. Burhans, A. Purdy.



### We Go Staff

1st Row: G. Wiesbrock, Miss Moore, G. Schlueter, G. Van Dran, L. Lenertz, P. Streit, G. Harbelis, D. Gramer.

2nd Row: Mr. Kiiskila, L. Graham, M. Baker, B. Sauber, L. Wheeland, L. Streit, M. McNichols, M. Struckman, N. Bradley, J. Hammer, A. Jarchow.

3rd Row: B. Glasshagel, L. McLeod, C. Dodge, P. Dickey, D. Heinz, M. Gramer, B. Sheahan, M. Scobey, S. Dettmann, P. Burhans.

4th Row: S. Kroning, M. Doherty, J. Flens, J. Adamson, S. Lockie, J. Wilder, J. Sauber, C. Sprague, P. Berndt, I. Robinson, A. Purdy, S. Stone.







## Student Council

1st Row: O. Homer (President), L. Dettmann, B. Hutson, S. Dettmann.  
 2nd Row: G. Schlueter, S. Cue, M. Buckley, S. Rucker.  
 3rd Row: B. Lanz, O. Shaw, B. Enders, K. Wheeland.



## "The Inner Willy"

Gene Schlueter . . . . .	Willy
Glen Ives . . . . .	Inner Willy
Georgeanna Chesnut . . .	Aunt Olga
Connie Judd . . . . .	Aunt Hester
Allene Schusler . . . . .	Aunt Louise
Andy Purdy . . . . .	Marybelle
Joan Siemering . . . . .	Carol
Pat Burhans . . . . .	Janet
	Twins
Suzi Dettmann . . . . .	Trudy
Harold Smith . . . . .	Mike
Walter Struckman . . . . .	Stanley
Sandra Cue . . . . .	Stage Manager
Miss Koupal . . . . .	Director











## Band

### Upper left:

1st Row: L. Hendricks, D. Rucker.  
 2nd Row: C. Born, S. Dettmann, C. Brown.  
 3rd Row: D. Bond, B. Russell, S. Stone, M. Root.

### Upper center:

J. Donahue, N. Bradley, M. Johnson.

### Upper right:

1st Row: B. Lanz, D. Geiken, G. Nottingham.  
 2nd Row: E. Dierking, D. Heinz.  
 3rd Row: D. Thielking, B. Lootens, N. Lootens.

### Lower left:

1st Row: L. McLeod, N. Bradley, A. Wegener, J. Wegener.  
 2nd Row: M. Brown, L. Cue, C. Brown, M. Scobey.  
 3rd Row: A. Schram, C. Cook, G. Catriz.  
 4th Row: G. Cain, C. Buhr.  
 5th Row: L. Stone.

### Lower center:

1st Row: H. Stahl, D. Rybacki, A. Catriz.  
 2nd Row: R. Kullman, W. Rohr, D. Kerner.

### Lower right:

1st Row: P. Giambri, D. Weissing, R. Berndt.  
 2nd Row: D. Homer, F. Brown, K. Wheeland, W. Hensel.



## Orchestra

1st Row: G. Chesnut, L. Weissing, D. Crane, L. Dettmann, J. Burns, D. Buhr, M. McNichols.

2nd Row: J. Cobain, M. Johnson, N. Sæck, R. Craig, M. Giese, C. Born, M. Lovelette, B. Hutson, S. Gerbers.

3rd Row: J. Wilson, C. Roloff, K. Wiesbrock, B. Wajta, J. Podzansky, D. Bond, C. Judd, J. Donahue.

4th Row: E. Schlueter, G. Cain, C. Cook, A. Wegener, B. Lanz, T. Craig.

5th Row: L. Stillman, D. Rybacki, W. Rohr, D. Weissing, G. Brown, T. Rucker, R. Schroeder, S. Perkins.

Standing: Mr. Howard.

## Dance Band

1st Row: R. Berger, N. Meriam, T. Rucker, B. Lanz, E. Dierking, D. Thielking.

2nd Row: B. Cook, O. Homer, R. Kullman.







## Girls Glee Club

1st Row: L. Dettmann, G. Giambri, G. Chesnut, M. Heinberg, J. Flens, M. Buckley, M. Brown, G. Brown.  
 2nd Row: E. Heiser, J. Karp, N. Brown, P. Burhans, C. Brown, M. Gardner, D. Geiken, S. Dettmann, B. Kruse.  
 3rd Row: N. Bradley, M. Patch, S. Rucker, G. Wiesbrock, C. Sprague, N. Rakow.  
 4th Row: L. Wheeland, L. Streit, S. McAleese, J. Bryson, L. Lenertz, A. Owen, G. Brooks, D. Burns, A. Jarchow.

## Girls Ensemble

1st Row: A. Jarchow, D. Burns.  
 2nd Row: M. Brown, C. Brown, S. Dettmann, L. Dettmann.  
 3rd Row: N. Rakow, G. Chesnut, G. Brooks.



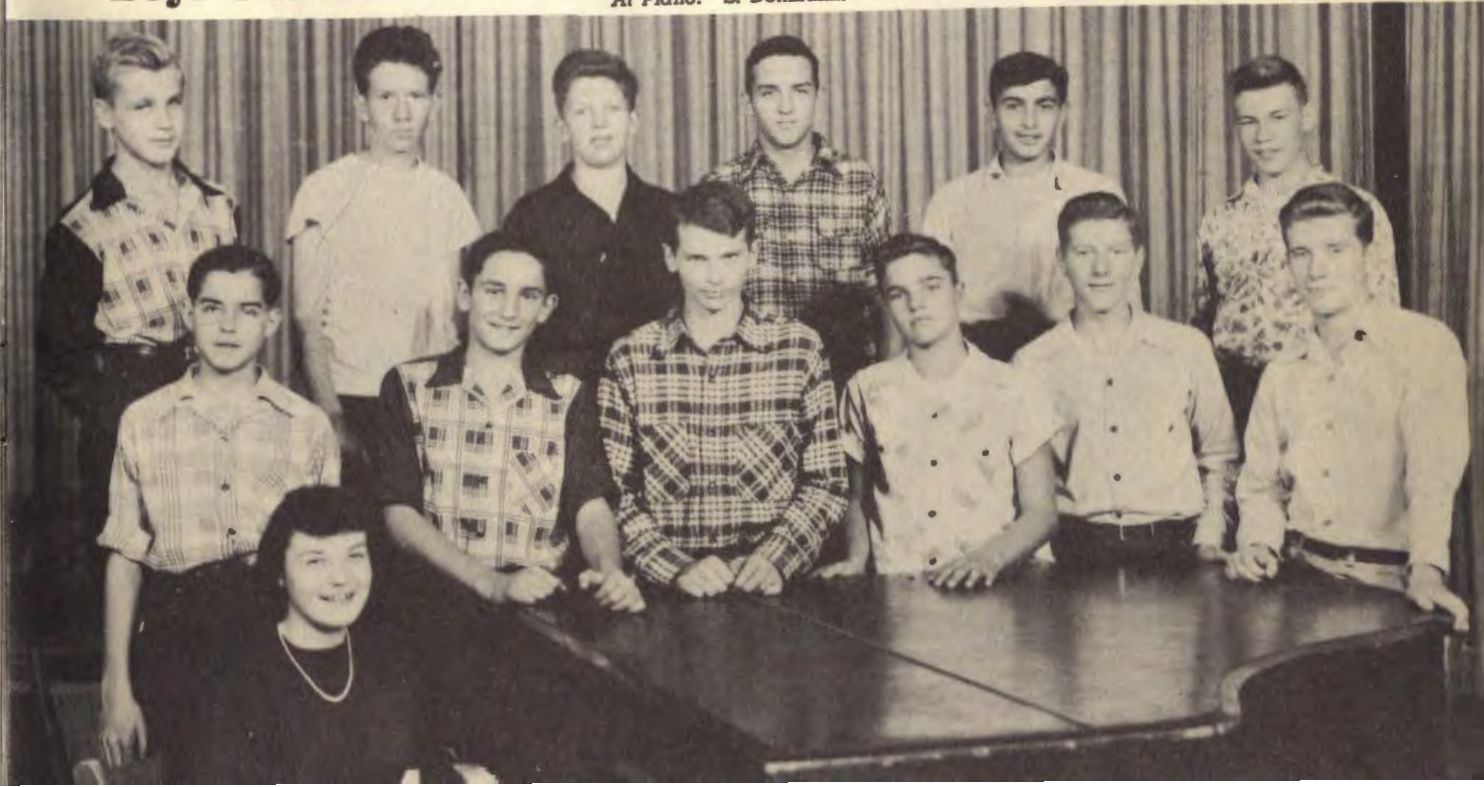
## Freshmen Girls

1st Row: N. Lootens, J. Keck, D. Buhr, C. Sinclair, S. Kroning, C. Otto, D. Schramer.  
 2nd Row: N. Walker, M. Gramer, C. Long, L. Graham, M. Heinz, J. Cobain, C. Beach, P. Raymond.  
 3rd Row: D. Holm, M. Doherty, M. Wheeler, B. Glasshagel, L. Bromilow, L. Buckner, J. Raffel, L. Snyder.  
 4th Row: A. Crane, G. Catriz, P. Gruenberg, S. Craig, A. Mitros, C. Born, I. Brown, D. Hellickson, F. Grommes.

## Chorus

## Boys Chorus

1st Row: G. Grommes, D. Taylor, J. Cornella, D. Kerner, R. Wilson, M. Le Baron.  
 2nd Row: D. Thielking, M. Root, H. Barbrey, J. Sauber, P. Giambri, R. Brown.  
 At Piano: S. Dettmann.







# Sports





## G. A. A.



- 1st Row: N. Brown, B. Glasshagel, B. Hutson, A. McNichols, P. Hensel, I. Robinson, D. Heinz, J. Wegener, P. Burhans, N. Heinz, J. Karp.
- 2nd Row: C. Brown, L. McLeod, D. Acheson, L. Bromilow, D. Schramer, C. Beach, E. Heiser, P. Dickey, M. Patch, M. McNichols, P. Raymond, M. Heinz, M. Doherty, C. Otto.
- 3rd Row: B. Miller, C. Kearns, L. Stillman, G. Heinz, M. Gramer, S. Cue, S. Dettmann, G. Brooks, A. Wegener, Miss Offner, C. Sinclair, D. Buhr, L. Cue.
- 4th Row: N. Walker, D. Beardsley, J. Cobain, B. Kruse, A. Speck, A. Crane, M. Frey, I. Scobey, C. Long, D. Hellickson, M. Mueller, S. Craig, F. Grommes, N. Lee, G. Catriz.
- 5th Row: E. Schmidt, I. Munson, J. Flens, S. Lockie, M. Lister, P. Farrell, K. Maquire, B. Russell, M. Heinberg, A. Purdy, A. Owen, C. Sprague, M. Wheeler, S. Kroning.
- 6th Row: B. Sheahan, M. Brown, M. Scobey, R. Pietrobon, D. Gramer, N. Bradley, A. Jarchow, P. Streit, G. Harbelis, L. Lenertz, L. Graham, S. McAleese, L. Wheeland, L. Streit, J. Bryson, M. Gardner.
- 7th Row: M. Buckley, L. Dettmann, A. Mitros, M. Struckman, E. Stillman, D. Dieter, S. Stone, P. Heisler, I. Wheeler, L. Buckner, M. Mueller, C. Born, G. Main, J. Raffel, I. Brown, B. Glasshagel, D. Holm, P. Berndt, C. Dodge.



## G. A. A. Board

- 1st Row: S. Dettmann, G. Brooks, A. Purdy, M. Scobey.
- 2nd Row: D. Acheson, A. Wegener, S. McAleese, B. Russell.
- 3rd Row: A. McNichols, Miss Offner, S. Cue, L. Cue.

## Cheerleaders

- Pat Streit, Georgeanna Harbelis, Suzi Dettmann, Loane Dettmann.



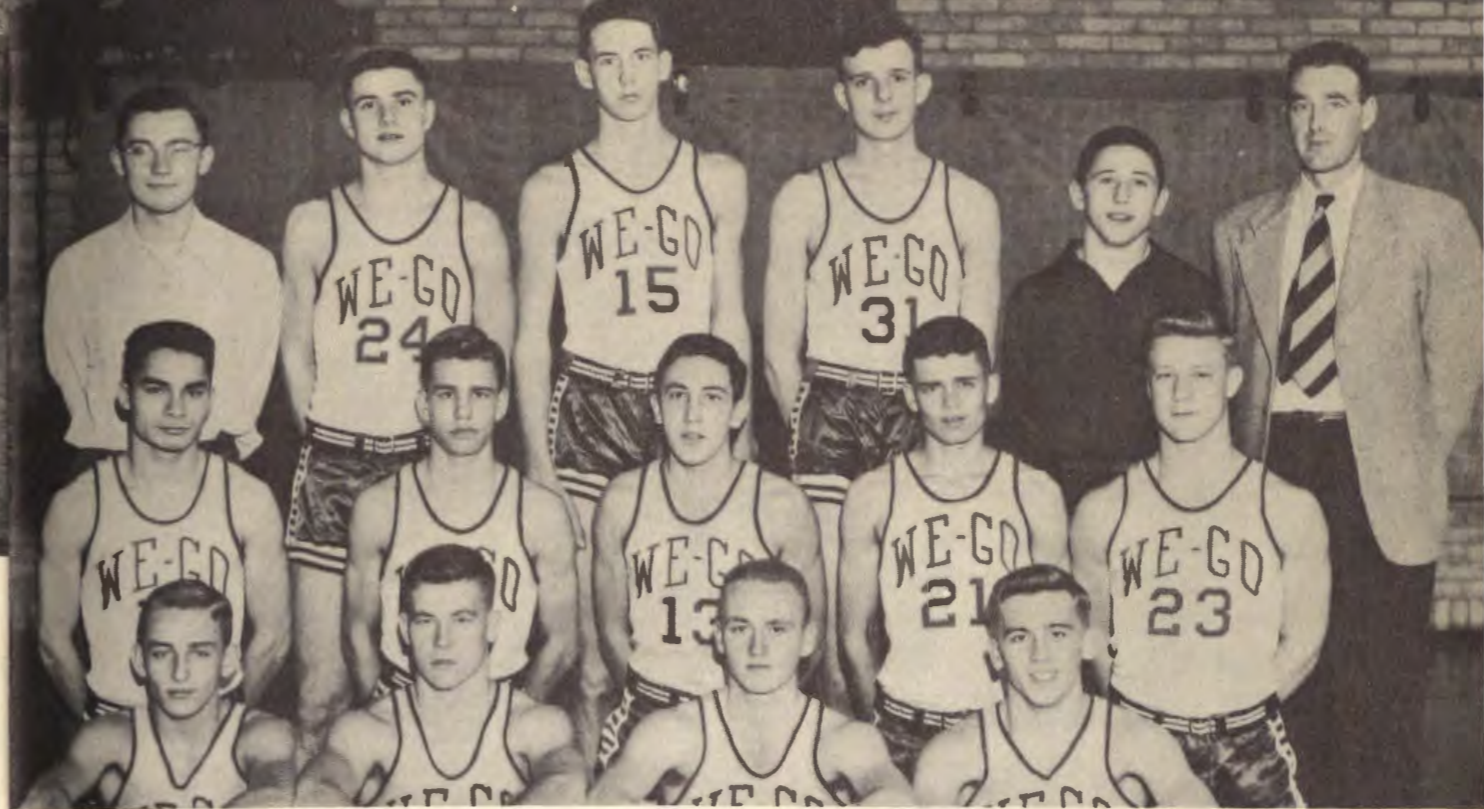




1st Row: O. Homer, E. Dierking, B. Kovac, P. Heibel, L. Pesetski, B. Lanz, H. Smith, W. Struckman, L. Bartsch, D. Zuehlke, D. Kroning, G. Schlueter, R. Badal, *manager*.

2nd Row: Mr. Price, Mr. Fletcher, S. Schramer, K. Lenertz, B. Enders, B. Cook, A. Zolin, D. Phillips, P. Lynch, A. Catriz, L. Brummel, H. Stahl, F. Whitton, C. Jacobs, R. Averill, *manager*, G. Schlueter, *manager*.

## Varsity Football



1st Row: O. Homer, E. Dierking, B. Kovac, D. Kroning.

2nd Row: C. Jacobs, H. Stahl, G. Schlueter, D. Griffin, L. Pesetski.

3rd Row: R. Averill, *manager*, L. Bartsch, N. Meriam, B. Clement, K. Lenertz, *manager*, Mr. Price.

## Varsity Basketball

## Football Frosh-Soph

1st Row: J. Fox, O. Tolley, R. Mell, D. Kaelin, K. Wheeland, D. Kaelin, W. Watanabe, A. Dean, T. Koch.

2nd Row: Mr. Jahns, Mr. Barthell, K. Golan, J. Rawlings, R. Berger, A. Babcock, C. Dierks, F. Brown, B. Stuart, G. Lenertz, J. Gent.

3rd Row: F. Hansen, D. Kerner, D. Craig, M. Root, P. Giambri, B. Van Burkom, H. Dovre, M. Scott, T. Swiatowski, H. Barbrey, D. Brown, R. Brown.

4th Row: G. Tinnes, K. Havlik, J. Hill, J. Kammes, O. Shaw, C. Gustafson, D. Crane, A. Anderson, R. Wilson, J. Kistenbroker, T. Rucker, G. Baum, R. Schmuggerow.



## Frosh-Soph Basketball

1st Row: T. Rucker, K. Golan, G. Tinnes, C. Dierks, O. Shaw.

2nd Row: D. Kaelin, A. Anderson, R. Wilson, C. Gustafson, R. Schmuggerow.

3rd Row: H. Smith, *manager*, D. Kaelin, K. Wheeland, R. Mell, W. Struckman, *manager*, Mr. Fletcher.







**Track**

1st row: O. Homer, K. Golan, E. Dierking, G. Ives, P. Heibel, D. Zuehlke.  
 2nd Row: T. Rucker, J. Wilder, D. Phillips, C. Goering, L. Pesetski, A. Catriz, D. Griffin.  
 3rd Row: R. Averill, manager, O. Shaw, D. Kroning, K. Wheeland, F. Kimmel, J. Kammes, R. Schmuggerow, G. Tinnes, Mr. Price.

**Lettermen's Club**



1st Row: W. Struckman, B. Kovac, C. Jacob, Mr. Price, L. Pesetski, H. Smith.  
 2nd Row: O. Homer, D. Griffin, B. Cook, E. Dierking, G. Schlueter.  
 3rd Row: R. Averill, B. Lanz, L. Bartsch, D. Phillips, L. Brummel.







Barb Reed



"Lennie" Bartsch



Harold Strauss



Dot & Chris Amelst



Connie Sprague



Dot & Zuelke



AN



Joyce Witnabe



ALBERT BARTSCH



"Pat" Lynch



nois Lenarty



DAVE BAND



RITA PIETROBBI



Ann Marie Deary



Sonia Gaitner



MARILYN BROWN



DON NICOSKI



DON GRIFFIN



bee BURNS



Suzi Wetmann



Audrey Eubank



Connie



"Andy" Purdy



Gloria



Dorothy Gramer





"SO LONG IT'S BEEN  
GOOD TO KNOW YOU"









